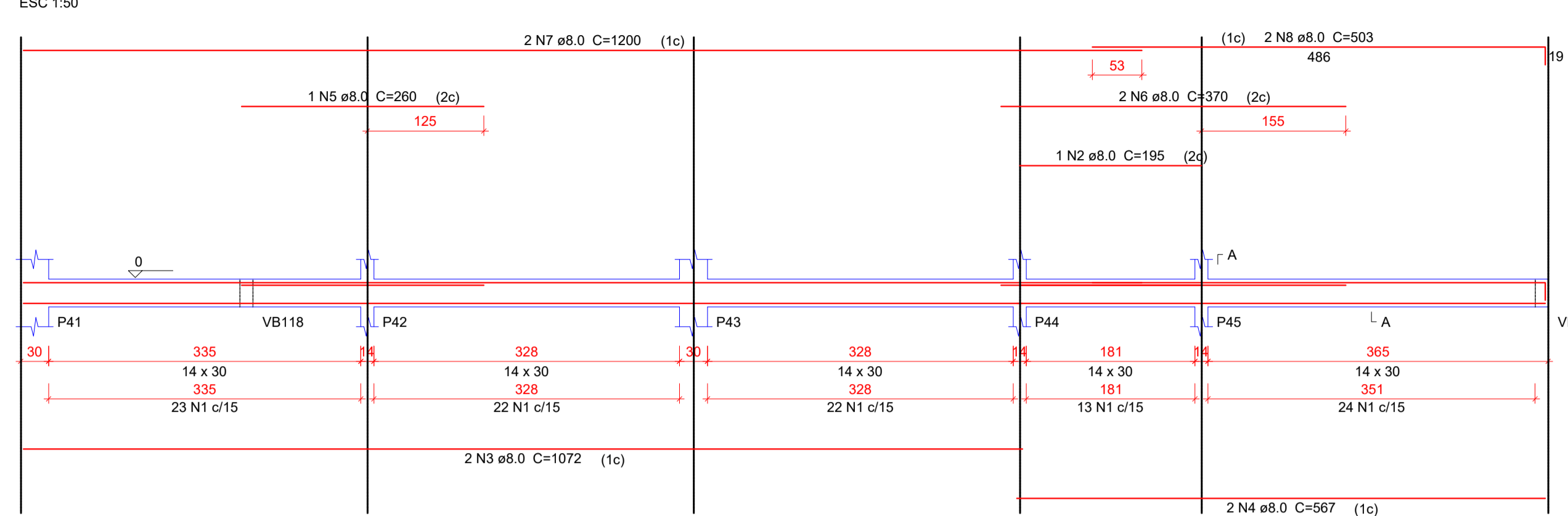
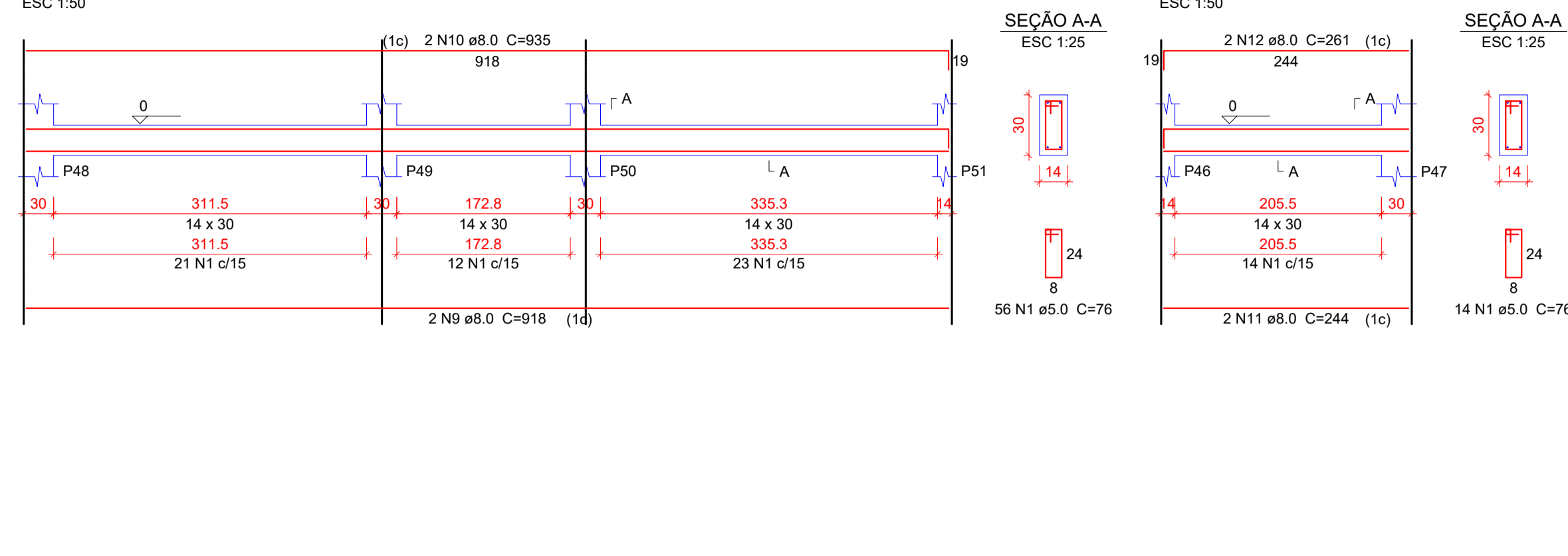


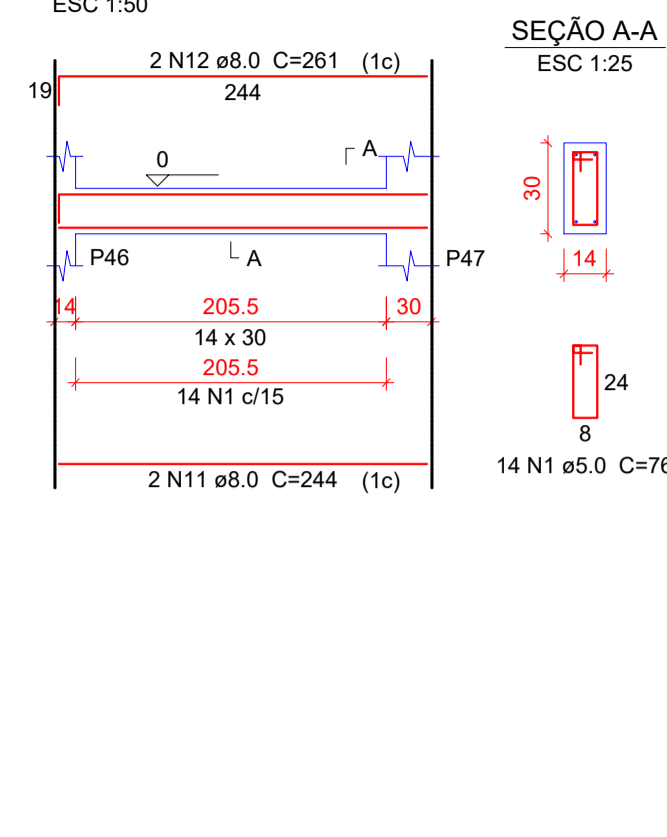
VB110



VB111



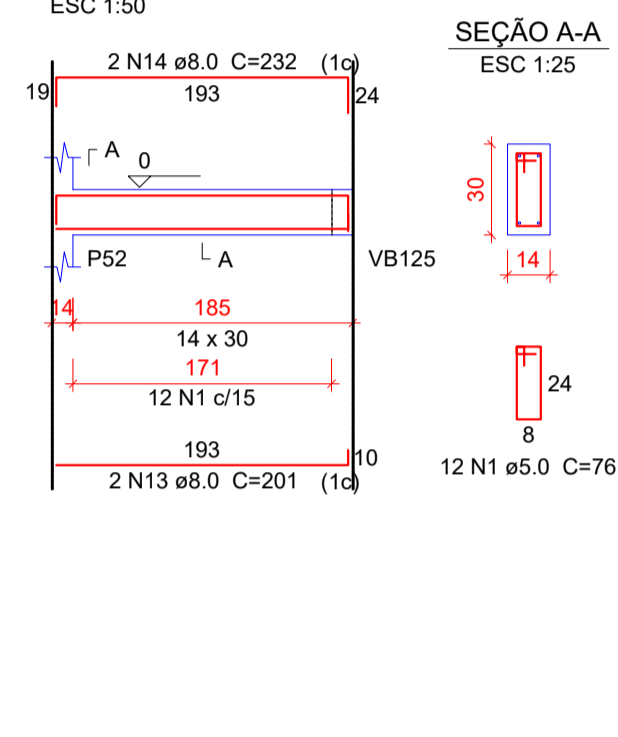
VB112



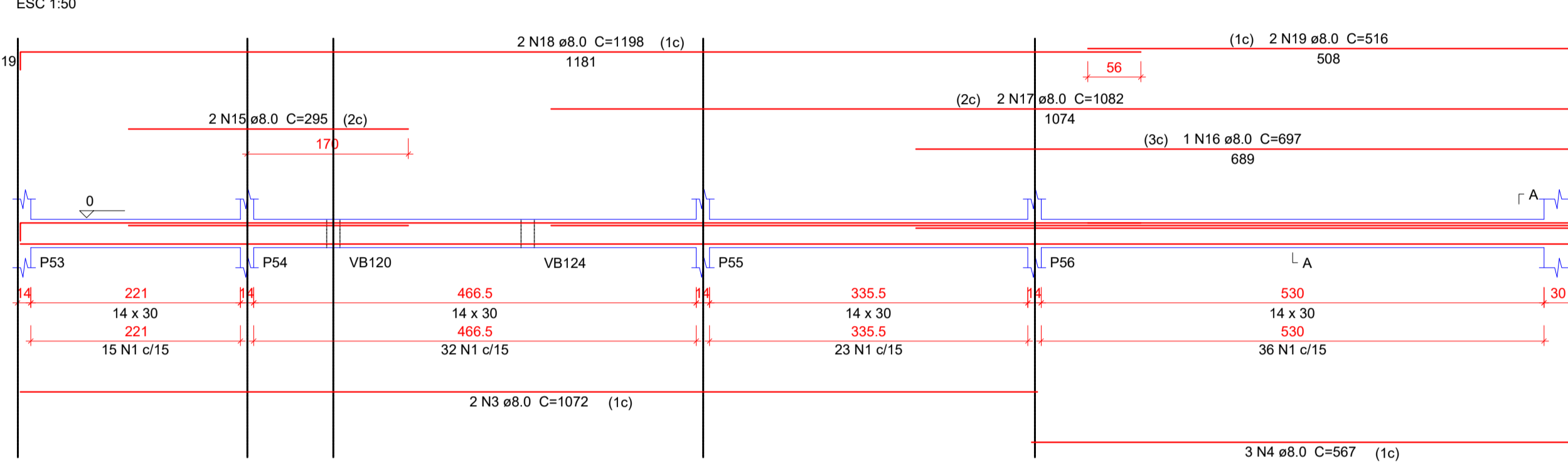
Relação do aço

ACO	N	DIAM	Q	UNIT	C.TOT
				(cm)	(cm)
CA50	1	5.0	775	76	58
	2	8.0	1	195	
	3	8.0	4	1072	
	4	8.0	5	567	
	5	8.0	1	260	
	6	8.0	2	370	
	7	8.0	2	1200	
	8	8.0	2	503	
	9	8.0	2	918	
	10	8.0	2	935	
	11	8.0	2	244	
	12	8.0	2	261	
	13	8.0	2	201	
	14	8.0	2	232	
	15	8.0	2	295	
	16	8.0	1	697	
	17	8.0	2	1082	
	18	8.0	4	1198	
	19	8.0	2	516	
	20	8.0	2	849	
	21	8.0	1	167	
	22	8.0	1	315	
	23	8.0	2	870	
	24	8.0	2	853	
	25	8.0	2	870	
	26	8.0	2	932	
	27	8.0	2	372	
	28	8.0	1	255	
	29	8.0	2	190	
	30	8.0	2	538	
	31	8.0	2	560	
	32	8.0	12	323	
	33	8.0	8	357	
	34	8.0	4	331	
	35	8.0	4	362	
	36	8.0	2	251	
	37	8.0	1	259	
	38	8.0	2	265	
	39	8.0	2	374	
	40	8.0	1	142	
	41	8.0	2	395	
	42	8.0	2	373	
	43	8.0	2	398	
	44	8.0	2	953	
	45	8.0	2	970	

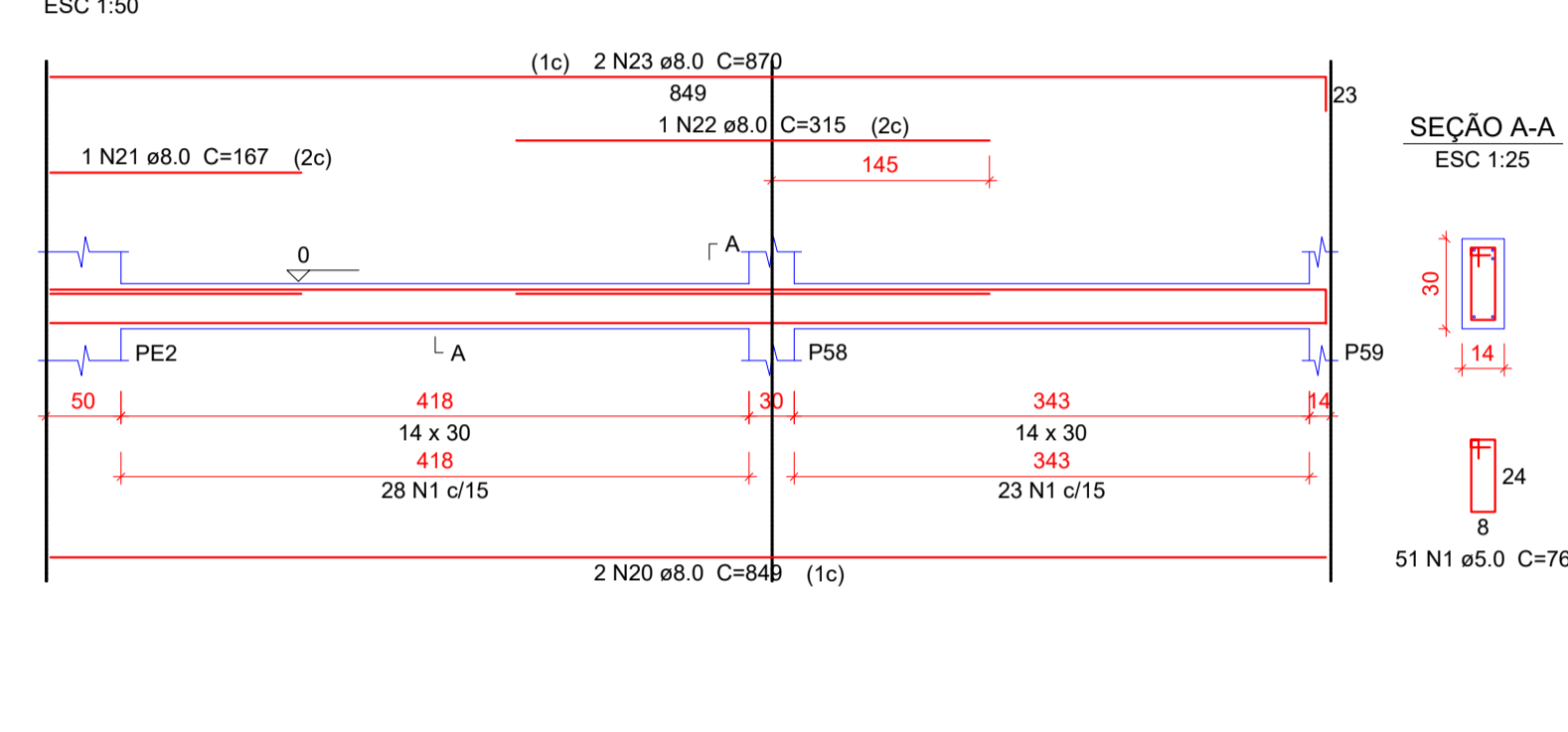
VB113



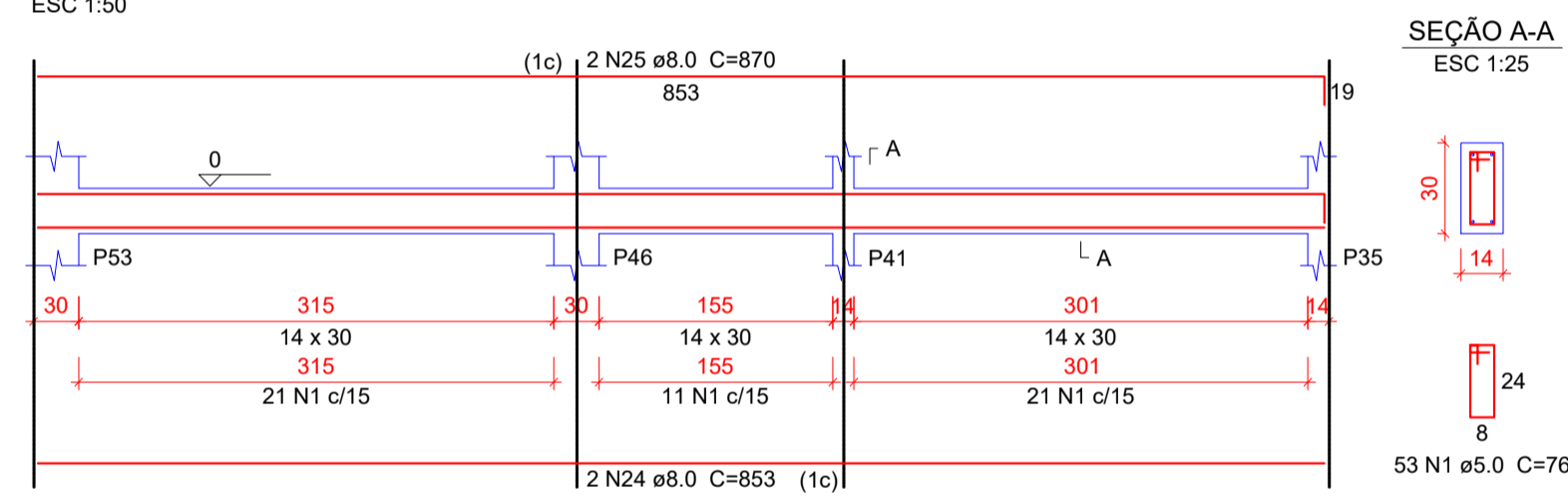
VB114



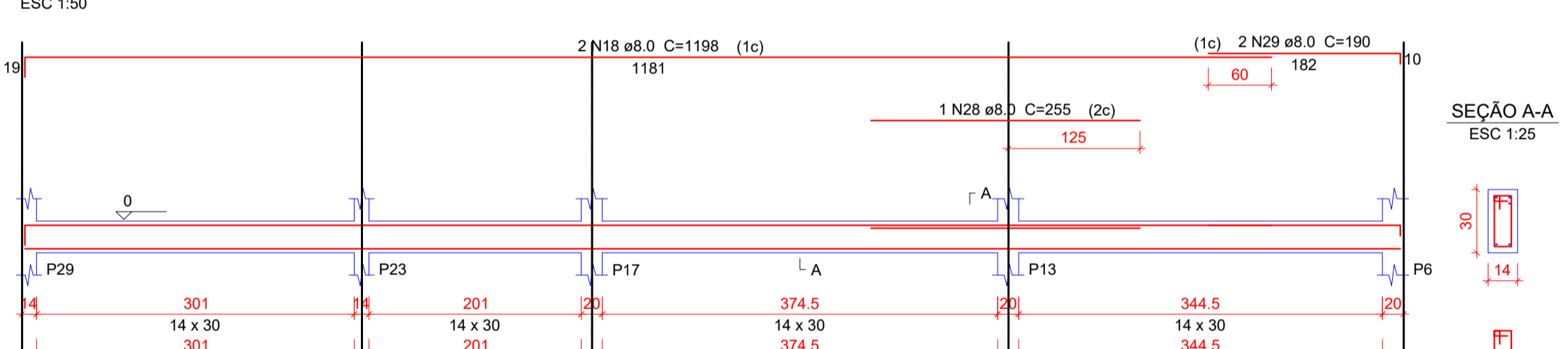
VB115



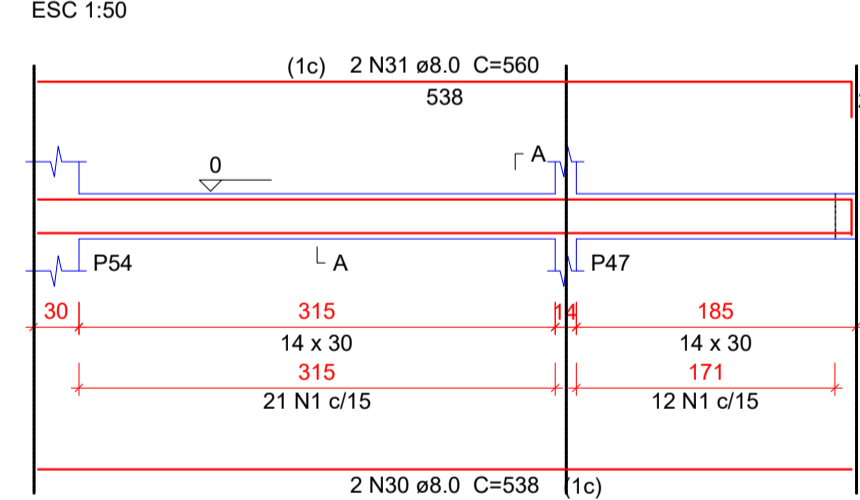
VB116



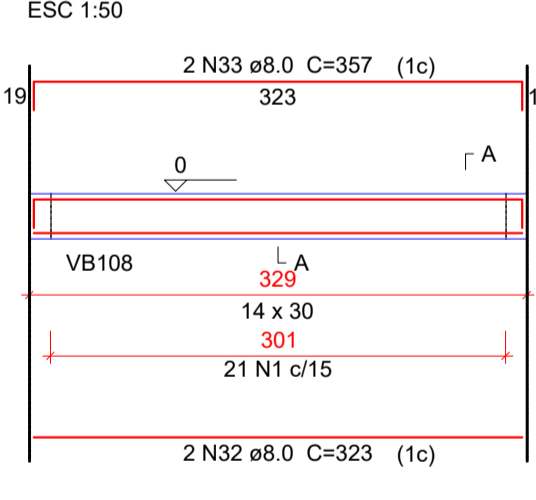
VB117



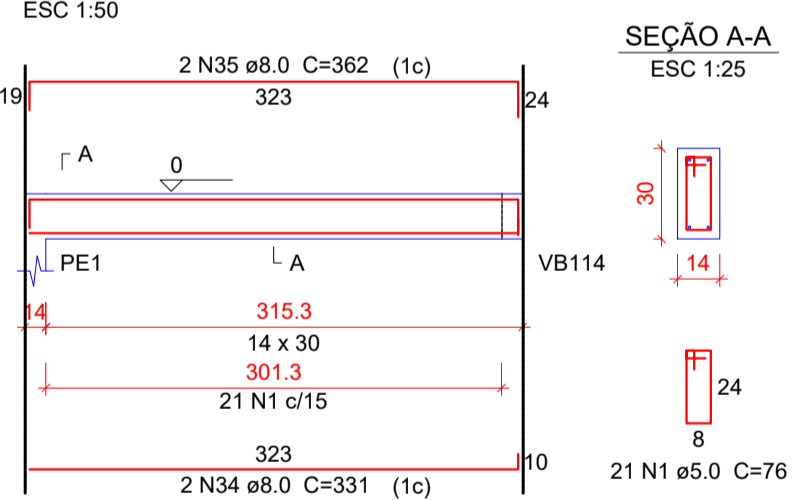
VB118



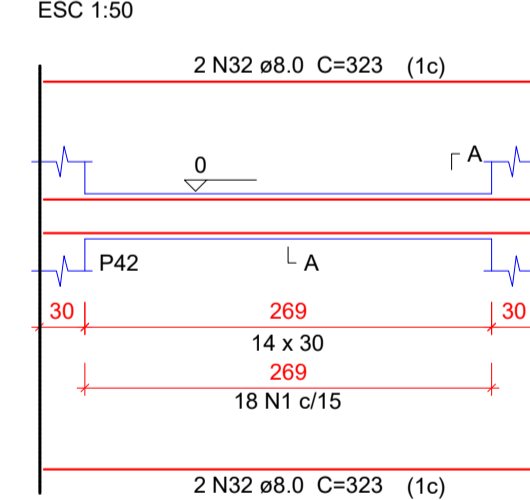
VB119



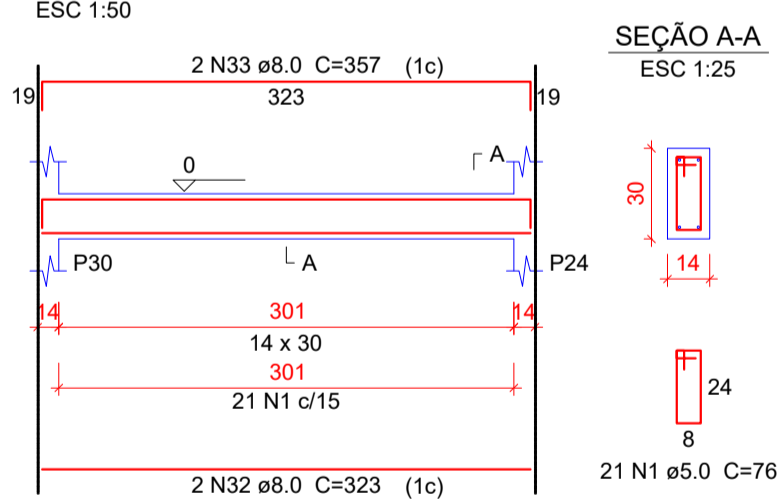
VB120



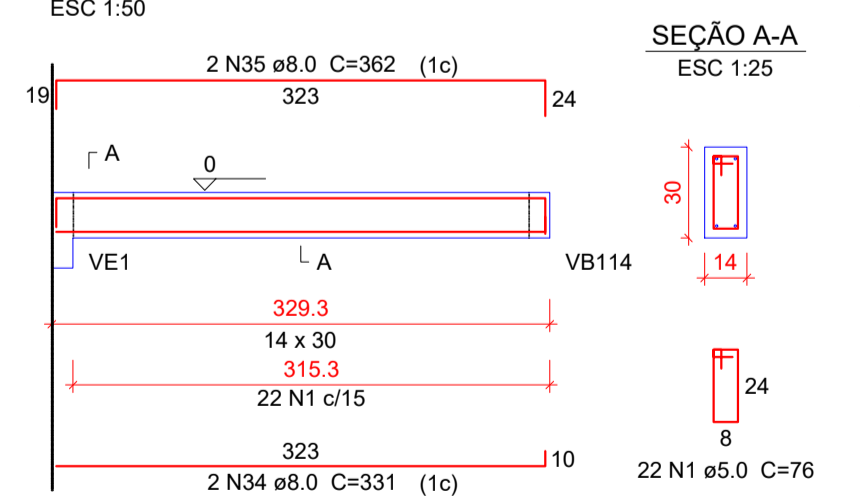
VB121



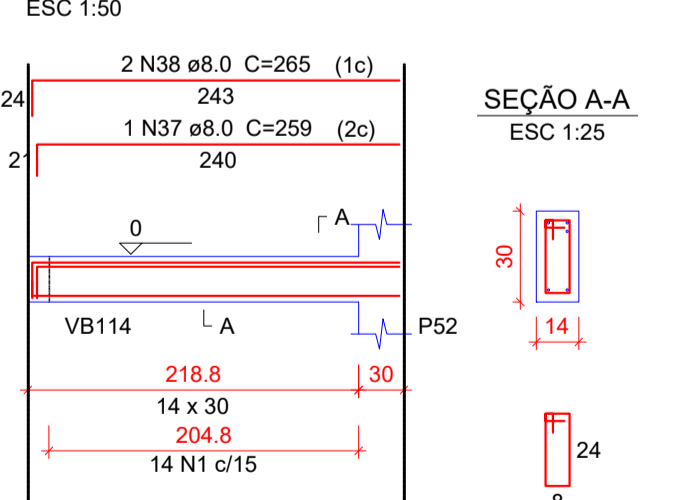
VB122



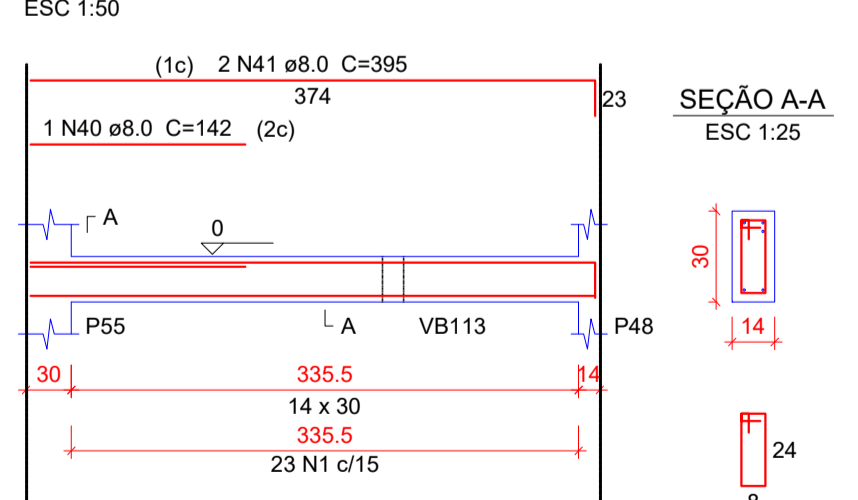
VB123



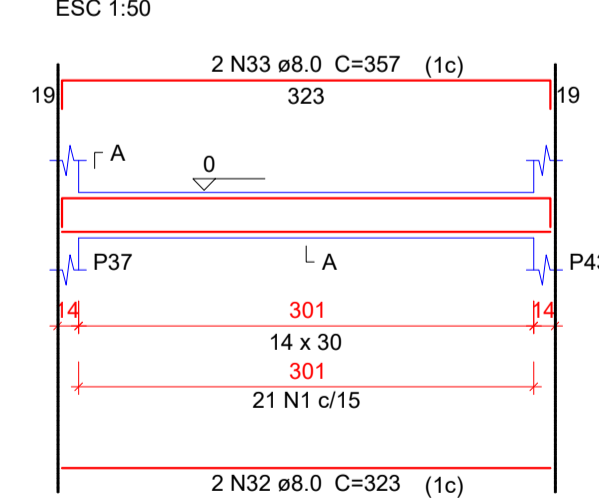
VB124



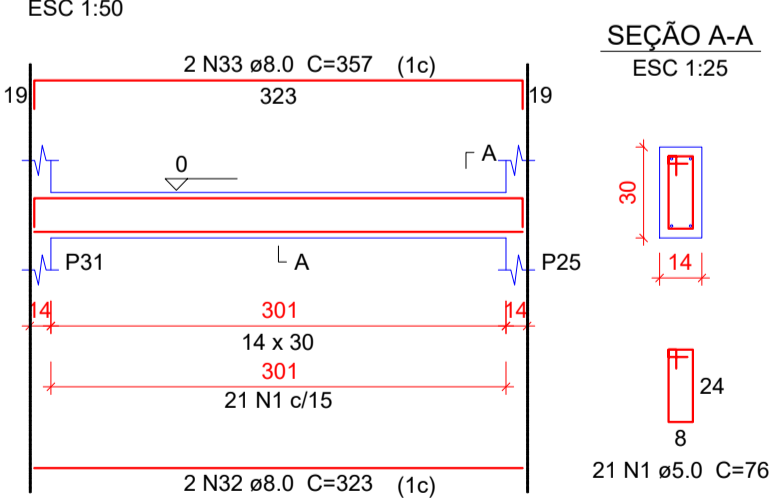
VB125



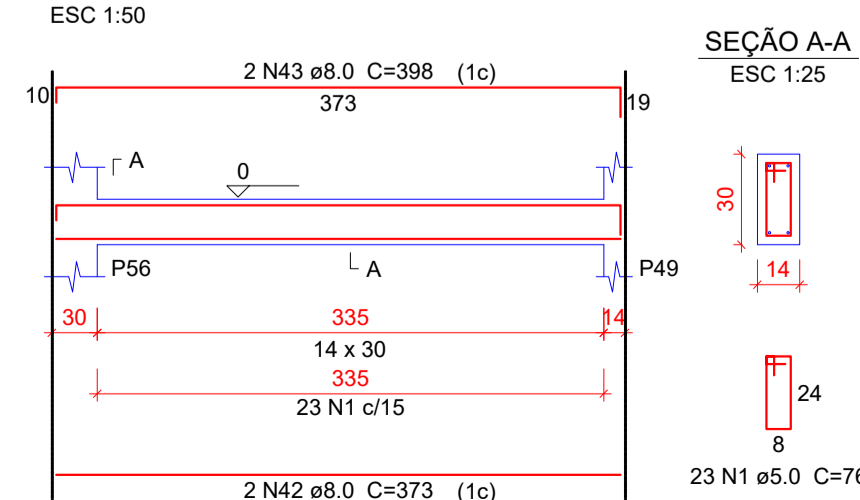
VB126



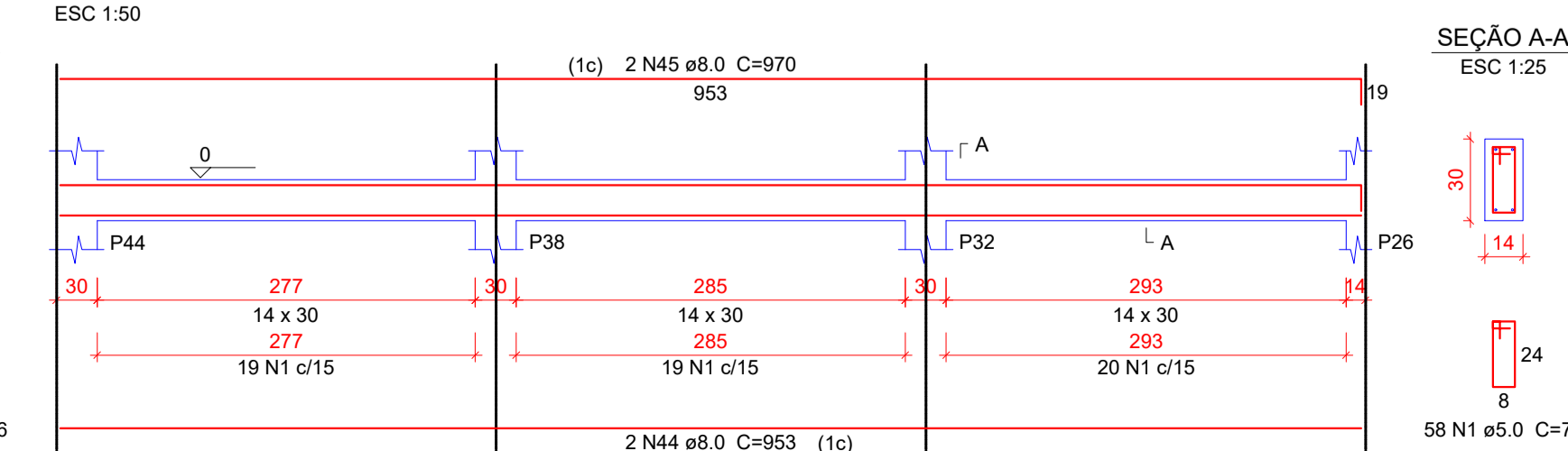
VB127



VB128



VB129



Resumo do aço

ACO	DIAM	C.TOTAL	PESO + 10%
		(m)	(kg)
CA50	8.0	572.5	248.5
CA60	5.0	589	99.9
PESO TOTAL			
CA50		248.5	
CA60			99.9

Vol. de concreto total (C-25) = 5.24 m³
 Área de forma total = 92.4 m²

ASSESSORIA TÉCNICA	OBRA
PROJETO: Indiamara de Oliveira Ribeiro Eng. Civil - CREA Nº 13.4548-3	Projeto de Reforma e Ampliação da UBS SARITA CABRAL Projeto Estrutural Nivel 0.00 *Vigas Baldrames
PREFEITO: Erlon Tancredo Costa	
DESENHO: Jeziel Santos Ribeiro	Escala: Como Indicado DATA: MARÇO/2022