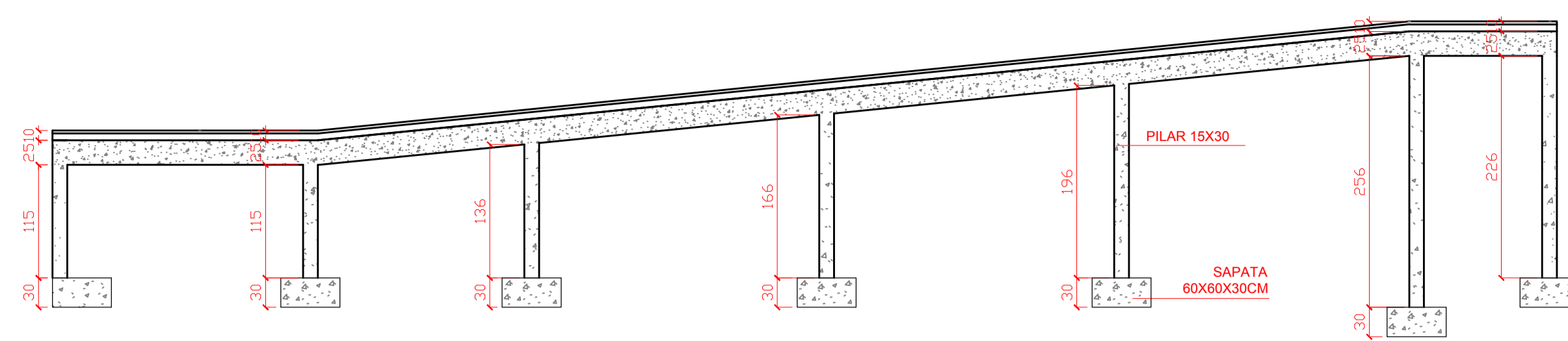
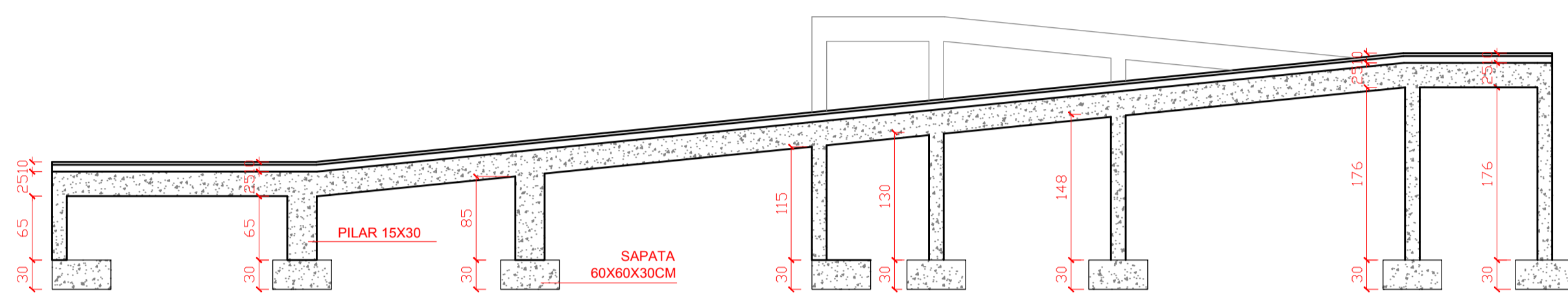


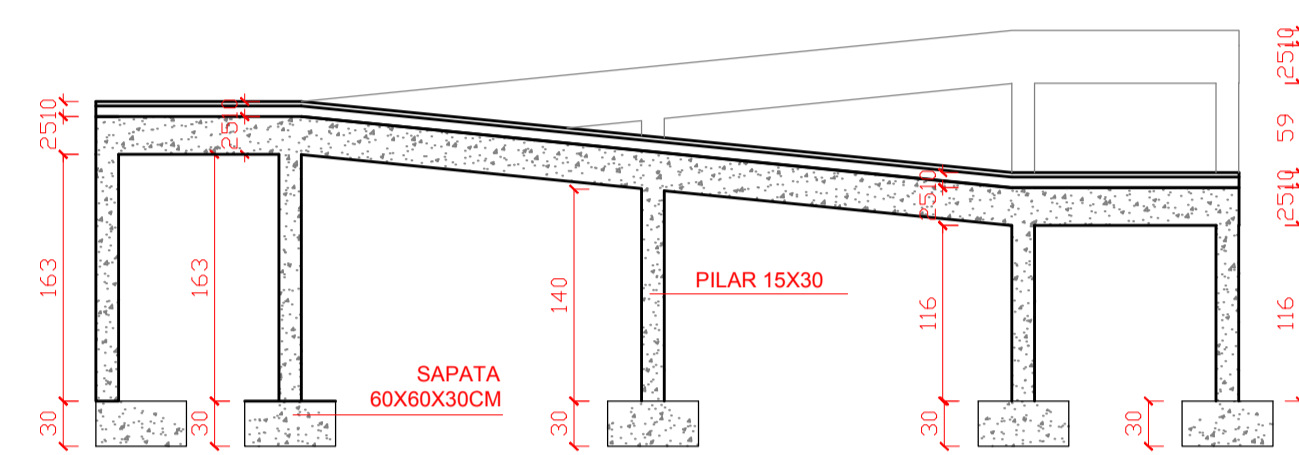
CORTE AA  
ESC 1:50



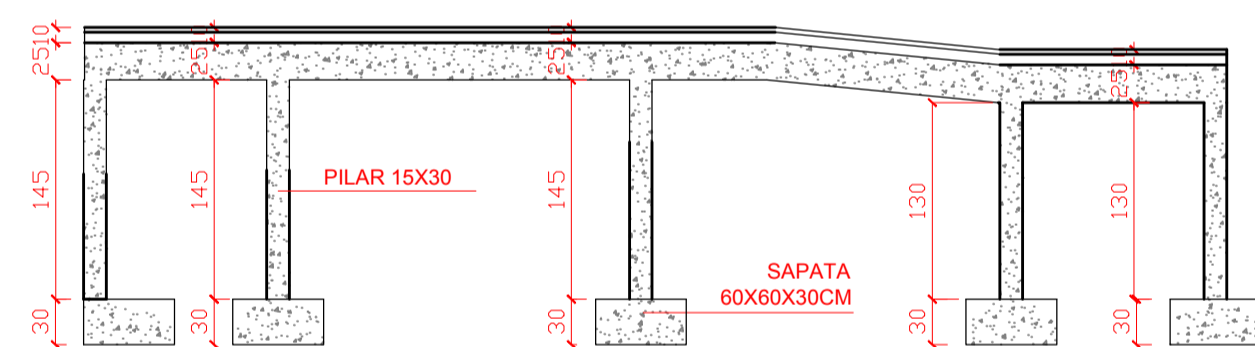
CORTE BB  
ESC 1:50



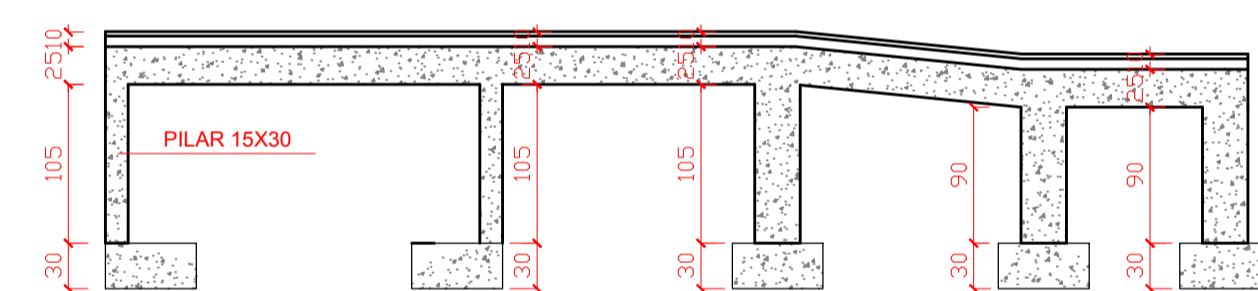
CORTE CC  
ESC 1:50



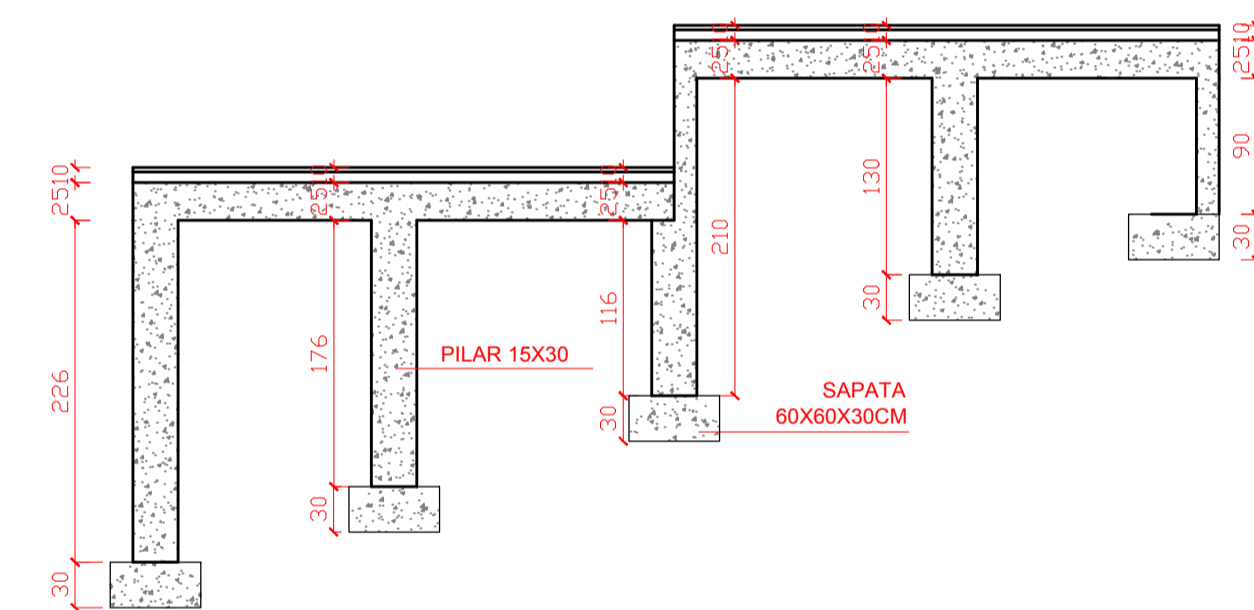
CORTE DD  
ESC 1:50



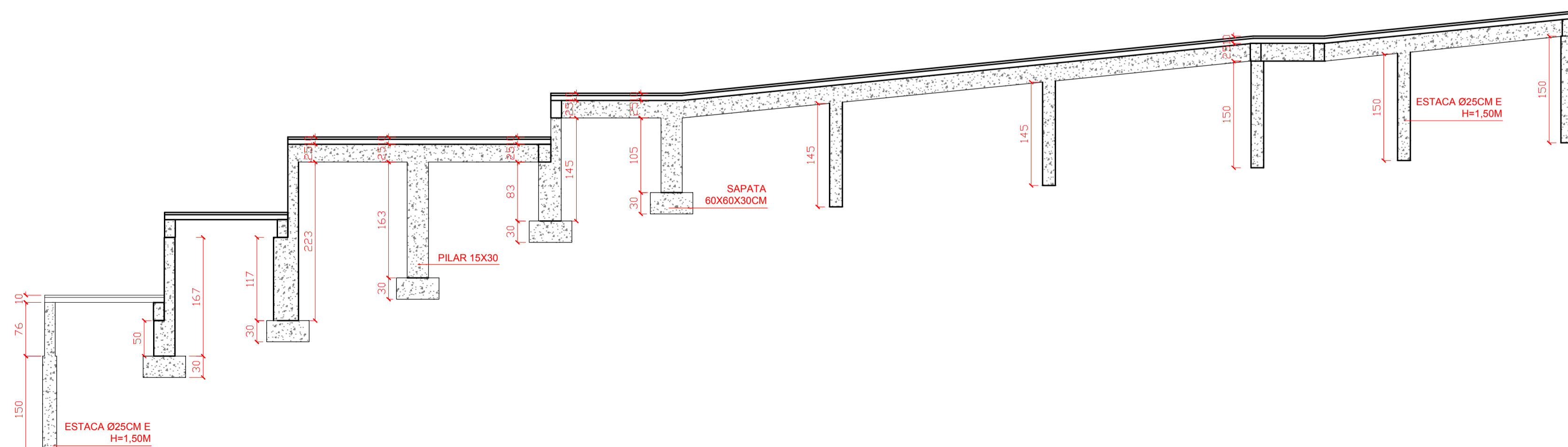
CORTE EE  
ESC 1:50



CORTE FF  
ESC 1:50



CORTE GG  
ESC 1:50



CORTE HH  
ESC 1:50

AMURES



ASSOCIAÇÃO DE MUNICÍPIOS DA REGIÃO SERRANA

PREFEITURA MUNICIPAL DE RIO RUFINO - SC

10/12

ASSESSORIA TÉCNICA

OBRA:

PROJETO:

Reforma das Futuras Instalações da Secretaria de Educação e Outros Órgãos

Indiamara de Oliveira Ribeiro  
Eng. Civil - CREA 13.4548-3

Projeto Estrutural da Rampa

PREFEITO:

Erlon Tancredo Costa

Cortes  
Detalhes

DESENHO:  
Mariane Moraes

Escala:  
Indicada

DATA:  
fevereiro/2021