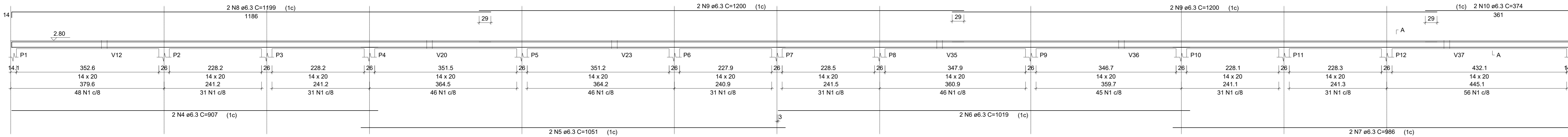


V1
ESC 1:50

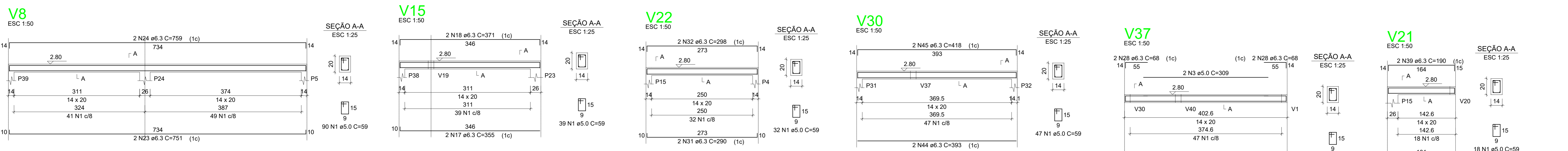
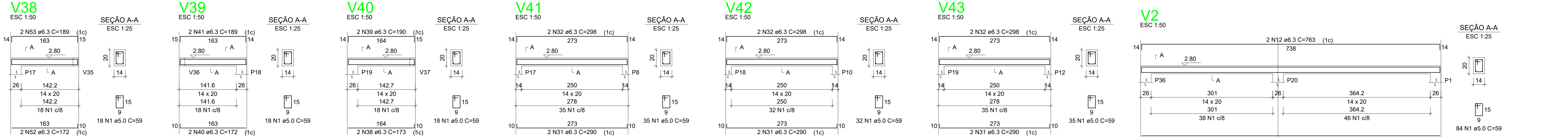
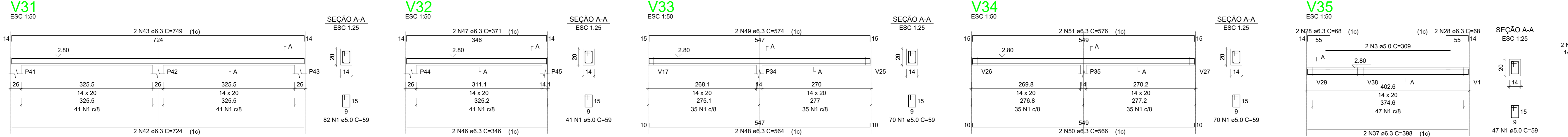
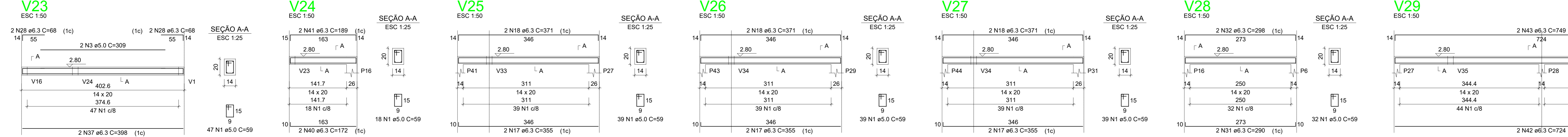
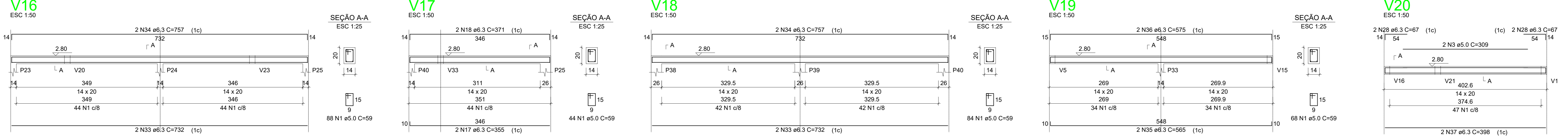
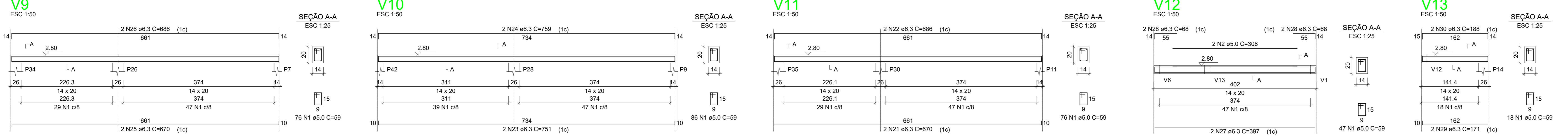
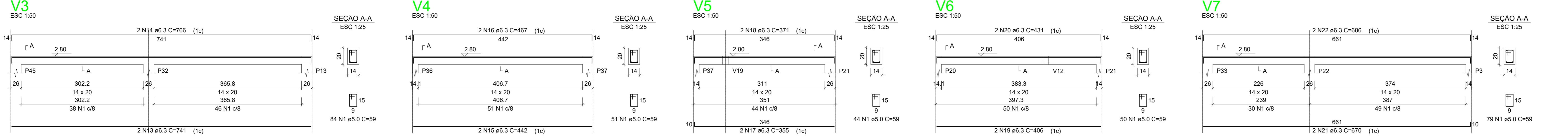


SEÇÃO A-A
ESC 1:25

RELAÇÃO DO AÇO

VI	VII	VIII
V1	V2	V3
V4	V5	V6
V7	V8	V9
V10	V11	V12
V13	V14	V15
V16	V17	V18
V19	V20	V21
V22	V23	V24
V25	V26	V27
V28	V29	V30
V31	V32	V33
V34	V35	V36
V37	V38	V39
V40	V41	V42
V43		

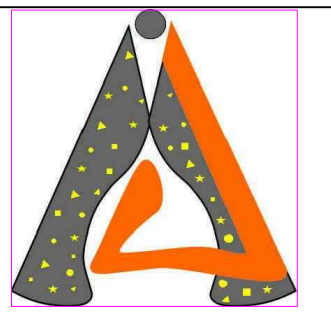
AÇO	N	DIAM (mm)	QUANT	C.UNIT (cm)	C.TOTAL (cm)
CA60	1	5.0	2618	59	154462
	2	5.0	2	308	616
	3	5.0	10	309	3090
	4	5.0	2	907	1814
CA50	5	6.3	2	1051	2102
	6	6.3	2	986	2038
	7	6.3	2	1019	1972
	8	6.3	2	1199	2398
	9	6.3	4	1200	4800
	10	6.3	2	374	748
	11	6.3	2	374	748
	12	6.3	2	763	1526
	13	6.3	2	741	1482
	14	6.3	2	607	1214
	15	6.3	2	442	884
	16	6.3	2	467	934
	17	6.3	12	355	4260
	18	6.3	12	371	4452
	19	6.3	2	431	862
	20	6.3	2	670	1340
	21	6.3	4	670	2680
	22	6.3	4	686	2744
	23	6.3	4	751	3004
	24	6.3	4	759	3036
	25	6.3	2	670	1340
	26	6.3	2	686	1372
	27	6.3	2	397	794
	28	6.3	2	68	136
	29	6.3	2	111	222
	30	6.3	2	188	376
	31	6.3	12	290	3480
	32	6.3	12	298	3576
	33	6.3	4	732	2928
	34	6.3	4	757	3028
	35	6.3	2	565	1130
	36	6.3	2	575	1150
	37	6.3	10	398	3980
	38	6.3	4	173	692
	39	6.3	4	190	760
	40	6.3	4	172	688
	41	6.3	4	199	796
	42	6.3	4	724	2896
	43	6.3	4	749	2996
	44	6.3	2	393	786
	45	6.3	2	418	836
	46	6.3	2	346	692
	47	6.3	2	371	742
	48	6.3	2	564	1128
	49	6.3	2	574	1148
	50	6.3	2	566	1132
	51	6.3	2	576	1152
	52	6.3	2	172	344
	53	6.3	2	172	344
				199	378



RESUMO DO AÇO

AÇO	DIAM (mm)	C.TOTAL (m)	PESO + 10% (kg)
CA50	6.3	878	236.3
CA60	5.0	1581.7	288.2
PESO TOTAL			524.5
CA50			236.3
CA60			288.2

Volume de concreto (C=30) = 6.22 m³
Área de forma = 120.02 m²



PROJETO PROJETO ESTRUTURAL LADO ESQUERDO 6 UNIDADES
CONTENIDO VIGAS COBERTURA
ENDEREÇO CIDADE RIO RUFINO - SC

PROPRIETÁRIO PREFEITURA MUNICIPAL DE RIO RUFINO
RESP. TEC ILDEJANNY MUNIZ
CREA S/C - 077439-5

ÁREA
DATA JUN/22
FOLHA 04

PROJETO AUTORIZADO POR RESOLUÇÃO Nº 104 DO CONSELHO FEDERAL DE ENGENHARIA DE 24 DE JUNHO DE 2011, DO CONSELHO CIVIL E REGULADO CONTRA 2011