

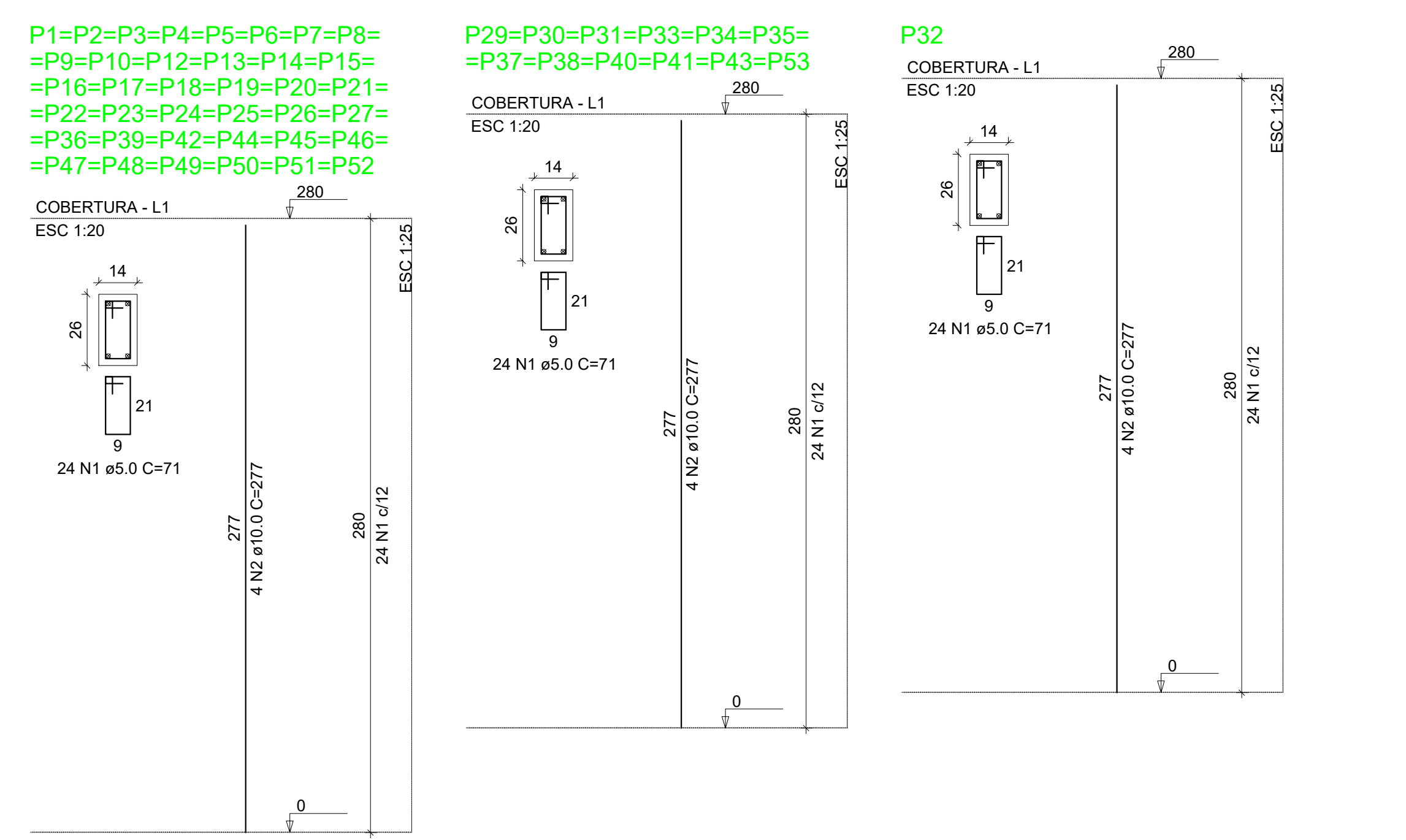
RELAÇÃO DO AÇO

AÇO	N	DIAM (mm)	QUANT	C.UNIT (cm)	C.TOTAL (cm)
V4	1	5.0	1463	59	86317
V52	2	6.3	2	231	462
V55	3	6.3	2	258	516
V59	4	6.3	2	633	1266
V62	5	6.3	2	1096	2196
V68	6	6.3	2	517	1034
V71	7	6.3	2	441	882
V74	8	6.3	2	466	932
V77	9	6.3	2	512	1024
V80	10	6.3	2	499	998
	11	8.0	2	460	920
	12	8.0	2	454	908
	13	8.0	2	680	1360
	14	8.0	2	899	1798
	15	8.0	2	130	260
	16	8.0	2	651	1302
	17	8.0	2	344	688
	18	8.0	2	761	1522
	19	8.0	2	1078	2156
	20	8.0	2	269	538
	21	8.0	4	269	1076
	22	8.0	2	270	540
	23	8.0	2	1111	2222
	24	8.0	2	530	1060
	25	8.0	2	107	214
	26	8.0	1	82	164
	27	8.0	2	315	630
	28	8.0	6	126	756
	29	8.0	6	152	912
	30	8.0	4	290	1160
	31	8.0	1	76	152
	32	8.0	2	333	666
	33	8.0	2	172	344
	34	8.0	2	516	1032
	35	8.0	2	171	342
	36	8.0	1	77	154
	37	8.0	2	332	664
	38	8.0	2	292	584
	39	8.0	2	280	560
	40	8.0	2	192	384
	41	8.0	2	525	1050
	42	10.0	2	515	1030
	43	10.0	1	179	358
	44	10.0	2	507	1014
	45	10.0	2	707	1414
	46	10.0	1	190	380
	47	10.0	2	951	1902
	48	10.0	1	165	330
	49	10.0	1	127	254
	50	10.0	2	1128	2256
	51	10.0	1	140	280
	52	10.0	2	312	624
	53	10.0	2	315	630
	54	10.0	2	709	1418
	55	10.0	2	329	658
	56	10.0	2	322	644
	57	12.5	2	801	1602
	58	12.5	2	318	636
	59	12.5	2	319	638
	60	12.5	2	207	414
	61	12.5	2	206	412
	62	12.5	2	225	450

RESUMO DO AÇO

AÇO	DIAM (mm)	C.TOTAL (m)	PESO + 10% (kg)
CA50	6.3	25.1	25.1
CA50	8.0	282.2	122.5
CA50	10.0	123.9	84
CA50	12.5	41.5	44
CA60	5.0	863.2	146.3
PESO TOTAL (kg)			
CA50		275.6	
CA60		146.3	

Volume de concreto (C-30) = 3.59 m³  
Área de forma = 69.15 m²



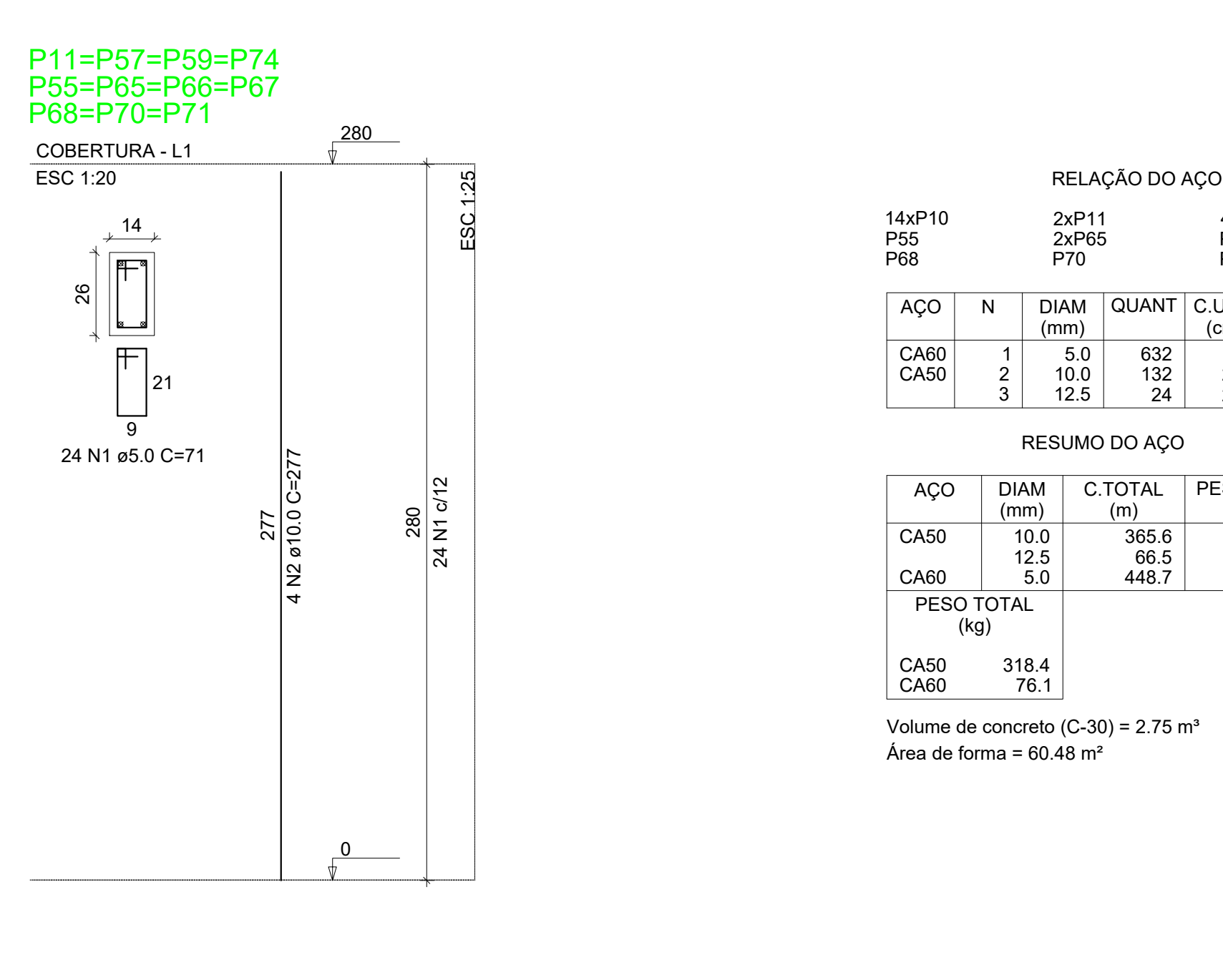
RELAÇÃO DO AÇO

AÇO	N	DIAM (mm)	QUANT	C.UNIT (cm)	C.TOTAL (cm)
CA60	1	5.0	1224	71	86904
CA50	2	10.0	232	277	64264

RESUMO DO AÇO

AÇO	DIAM (mm)	C.TOTAL (m)	PESO + 10% (kg)
CA50	10.0	1224	435.8
CA60	5.0	860	147.3
PESO TOTAL (kg)			
CA50		435.8	
CA60		147.3	

Volume de concreto (C-30) = 5.20 m³  
Área de forma = 114.24 m²



RELAÇÃO DO AÇO

AÇO	N	DIAM (mm)	QUANT	C.UNIT (cm)	C.TOTAL (cm)
CA60	1	5.0	632	71	44872
CA50	2	10.0	132	277	36564
CA60	3	12.5	24	277	6648

RESUMO DO AÇO

AÇO	DIAM (mm)	C.TOTAL (m)	PESO + 10% (kg)
CA50	10.0	365.6	248
CA60	12.5	66.5	70.4
CA60	5.0	448.7	76.1
PESO TOTAL (kg)			
CA50		318.4	
CA60		76.1	

Volume de concreto (C-30) = 2.75 m³  
Área de forma = 60.48 m²