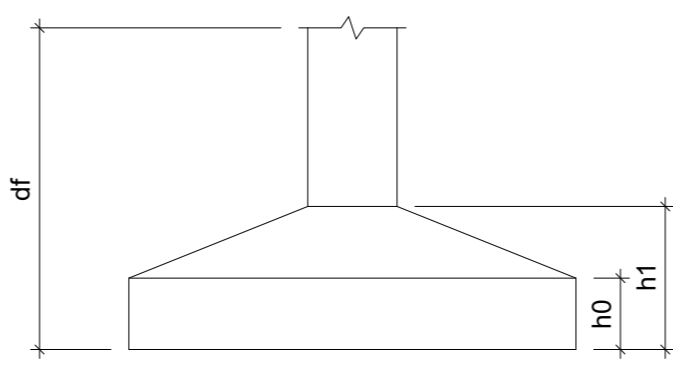


Planta de localização
escala 1:50

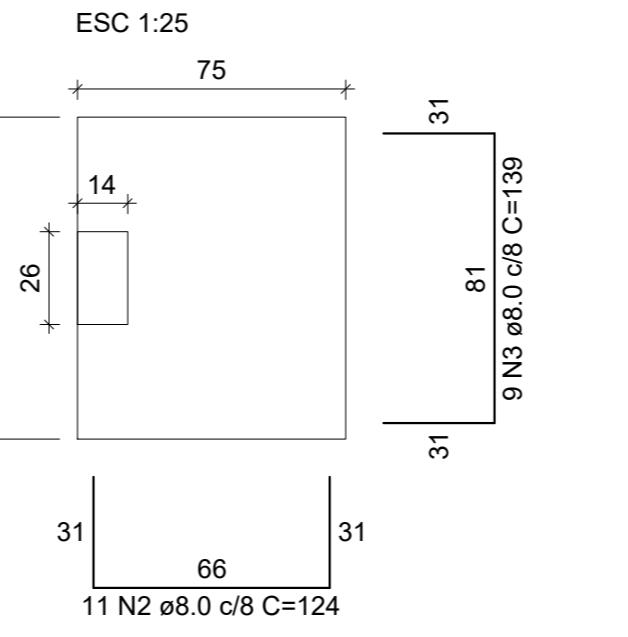
Nome	Seção (cm)	X (cm)	Y (cm)	Carga Máx. (kN)	Carga Mín. (kN)		Mx Máximo (kN.m)		My Máximo (kN.m)		Fx Máximo (kN)		Fy Máximo (kN)		Nome	Lado A	Lado B	h0 / ha (m)	h1 / hb (m)	df (m)
					Positivo	Negativo	Positivo	Negativo	Positivo	Negativo	Positivo	Negativo	Positivo	Negativo						
P1	14x26	3309.39	2796.86	31	22	0	0	0	0	0	0	0	0	0	S1	75	90	0.40	0.40	1.00
P2	14x26	3692.70	2805.62	44	35	0	0	0	0	0	0	0	0	0	S2	75	90	0.40	0.40	1.00
P3	14x26	3936.86	2803.61	28	22	0	0	0	0	0	0	0	0	0	S3	75	90	0.40	0.40	1.00
P4	14x26	4191.08	2805.62	41	32	0	0	0	0	0	0	0	0	0	S4	75	90	0.40	0.40	1.00
P5	14x26	4565.55	2803.61	47	40	0	0	0	0	0	0	0	0	0	S5	75	90	0.40	0.40	1.00
P6	14x26	4945.70	2805.61	41	31	0	0	0	0	0	0	0	0	0	S6	75	90	0.40	0.40	1.00
P7	14x26	5199.57	2803.62	29	22	0	0	0	0	0	0	0	0	0	S7	75	90	0.40	0.40	1.00
P8	14x26	5454.08	2805.62	41	31	0	0	0	0	0	0	0	0	0	S8	75	90	0.40	0.40	1.00
P9	14x26	5827.09	2803.61	47	40	0	0	0	0	0	0	0	0	0	S9	75	90	0.40	0.40	1.00
P10	14x26	6200.70	2805.61	41	31	0	0	0	0	0	0	0	0	0	S10	75	90	0.40	0.40	1.00
P11	14x26	6454.76	2803.62	27	21	0	0	0	0	0	0	0	0	0	S11	75	90	0.40	0.40	1.00
P12	14x26	6709.07	2805.61	48	39	0	0	0	0	0	0	0	0	0	S12	75	90	0.40	0.40	1.00
P13	14x26	7160.51	2798.93	31	24	0	-1	0	-9	0	-4	3	-2	S13	75	90	0.40	0.40	1.00	
P14	14x26	3682.08	2541.62	30	21	0	0	0	0	0	0	0	0	0	S14	75	90	0.40	0.40	1.00
P15	14x26	4191.07	2541.61	29	20	0	0	0	0	0	0	0	0	0	S15	75	90	0.40	0.40	1.00
P16	14x26	4945.08	2541.61	29	20	0	0	0	0	0	0	0	0	0	S16	75	90	0.40	0.40	1.00
P17	14x26	5454.07	2541.62	29	20	0	0	0	0	0	0	0	0	0	S17	75	90	0.40	0.40	1.00
P18	14x26	6200.08	2541.62	29	20	0	0	0	0	0	0	0	0	0	S18	75	90	0.40	0.40	1.00
P19	14x26	6709.07	2541.62	30	21	0	0	0	0	0	0	0	0	0	S19	75	90	0.40	0.40	1.00
P20	14x26	3268.51	2408.82	40	36	1	0	10	0	5	0	2	-2	S20	75	90	0.40	0.40	1.00	
P21	14x26	3686.58	2409.61	49	40	0	0	0	0	0	0	0	0	0	S21	75	90	0.40	0.40	1.00
P22	14x26	3936.08	2409.62	39	27	0	0	0	0	0	0	0	0	0	S22	75	90	0.40	0.40	1.00
P23	14x26	4206.58	2409.62	45	35	0	0	0	0	0	0	0	0	0	S23	75	90	0.40	0.40	1.00
P24	14x26	4569.57	2409.61	58	54	0	0	0	0	0	0	0	0	0	S24	75	90	0.40	0.40	1.00
P25	14x26	4929.57	2409.61	44	34	0	0	0	0	0	0	0	0	0	S25	75	90	0.40	0.40	1.00
P26	14x26	5199.57	2409.61	41	28	0	0	0	0	0	0	0	0	0	S26	75	90	0.40	0.40	1.00
P27	14x26	5469.58	2409.61	44	34	0	0	0	0	0	0	0	0	0	S27	75	90	0.40	0.40	1.00
P28	14x26	5828.00	2409.62	58	54	0	0	0	0	0	0	0	0	0	S28	75	90	0.40	0.40	1.00
P29	14x26	6184.57	2409.62	44	34	0	0	0	0	0	0	0	0	0	S29	75	90	0.40	0.40	1.00
P30	14x26	6454.76	2409.61	39	27	0	0	0	0	0	0	0	0	0	S30	75	90	0.40	0.40	1.00
P31	14x26	6724.58	2409.61	48	39	0	0	0	0	0	0	0	0	0	S31	75	90	0.40	0.40	1.00
P32	14x26	7107.50	2410.76	40	36	0	0	0	0	0	0	0	0	0	S32	75	90	0.40	0.40	1.00
P33	14x26	3936.64	2157.59	43	27	0	0	0	0	0	0	0	0	0	S33	75	90	0.40	0.40	1.00
P34	14x26	5199.57	2157.35	43	27	0	0	0	0	0	0	0	0	0	S34	75	90	0.40	0.40	1.00
P35	14x26	6454.39	2157.50	43	27	0	0	0	0	0	0	0	0	0	S35	75	90	0.40	0.40	1.00
P36	14x26	3234.33	2085.62	28	18	1	0	8	0	3	0	2	-3	S36	75	90	0.40	0.40	1.00	
P37	14x26	3660.57	2078.61	35	25	0	0	0	0	0	0	0	0	0	S37	75	90	0.40	0.40	1.00
P38	14x26	4212.57	2078.61	32	21	0	0	0	0	0	0	0	0	0	S38	75	90	0.40	0.40	1.00
P39	14x26	4569.58	2078.61	38	29	0	0	0	0	0	0	0	0	0	S39	75	90	0.40	0.40	1.00
P40	14x26	4923.57	2078.61	32	21	0	0	0	0	0	0	0	0	0	S40	75	90	0.40	0.40	1.00
P41	14x26	5475.58	2078.61	31	21	0	0	0	0	0	0	0	0	0	S41	75	90	0.40	0.40	1.00
P42	14x26	5827.07	2078.61	38	29	0	0	0	0	0	0	0	0	0	S42	75	90	0.40	0.40	1.00
P43	14x26	6175.57	2078.62	32	21	0	0	0	0	0	0	0	0	0	S43	75	90	0.40	0.40	1.00
P44	14x26	6730.58	2078.62	33	23	0	0	0	0	0	0	0	0	0	S44	75	90	0.40	0.40	1.00
P45	14x26	7062.71	2085.64	26	16	0	-2	0	-8	0	-3	2	-3	S45	75	90	0.40	0.40	1.00	

Os esforços indicados nesta tabela são os valores máximos obtidos pela envoltória de todas as combinações definidas para as fundações. Para análises complementares, deve-se consultar o relatório de esforços na fundação, que apresenta os valores calculados para cada combinação.

Localização no eixo X			Localização no eixo Y		
Coordenadas (cm)	Nome	Nome	Coordenadas (cm)	Nome	Nome
3234.33	P36	2805.61	P2		
3309.39	P1	2805.62	P4		
3692.70	P20	2803.61	P11, P12		
3936.86	P37	2805.61	P8		
4191.08	P3	2805.61	P14		
4565.55	P5	2805.61	P15, P16		
4945.70	P6	2805.61	P17, P18, P19		
5199.57	P7	2805.62	P21		
5454.08	P8	2805.62	P22		
5827.09	P9	2805.62	P23		
6200.70	P10	2805.62	P24, P25, P26, P27		
6454.76	P11	2805.62	P28, P29		
6709.07	P12	2805.61	P30, P31		
7160.51	P13	2805.61	P32		
3682.08	P2	2541.62	P33		
3936.64	P3	2541.62	P34		
4191.07	P4	2541.62	P35		
4569.57	P5	2541.62	P36		
4923.57	P6	2541.62	P37		
4929.57	P25	2541.62	P38		
5469.58	P27	2541.62	P39		
5827.07	P42	2541.62	P40		
5827.99	P9	2541.62	P41		
6184.57	P29	2541.62	P42		
6178.57	P43	2541.62	P43		
6184.57	P29	2541.62	P44		
6200.08	P18	2541.62	P45		
6300.70	P10	2541.62			
6454.39	P35	2541.62			
6454.76	P11, P30	2541.62			
6709.07	P12	2541.62			
6724.58	P31	2541.62			
6730.58	P44	2541.62			
7062.71	P45	2541.62			
7107.50	P32	2541.62			
7160.51	P13	2541.62			

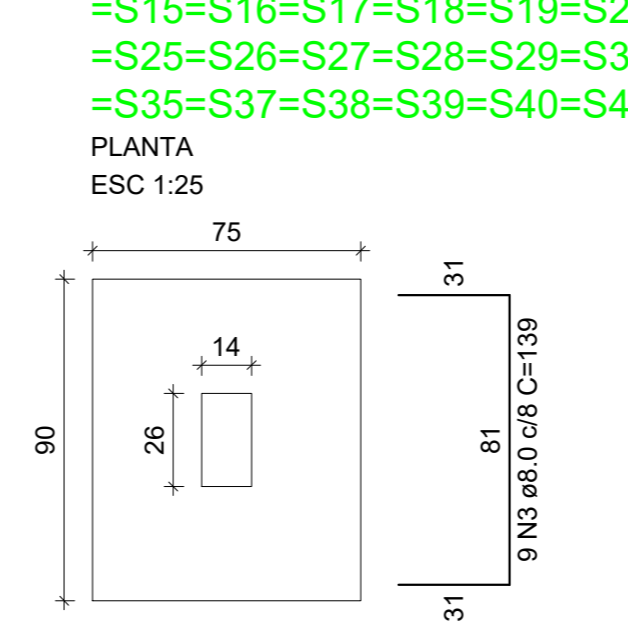


S1=S13=S20=S32=S36=S45

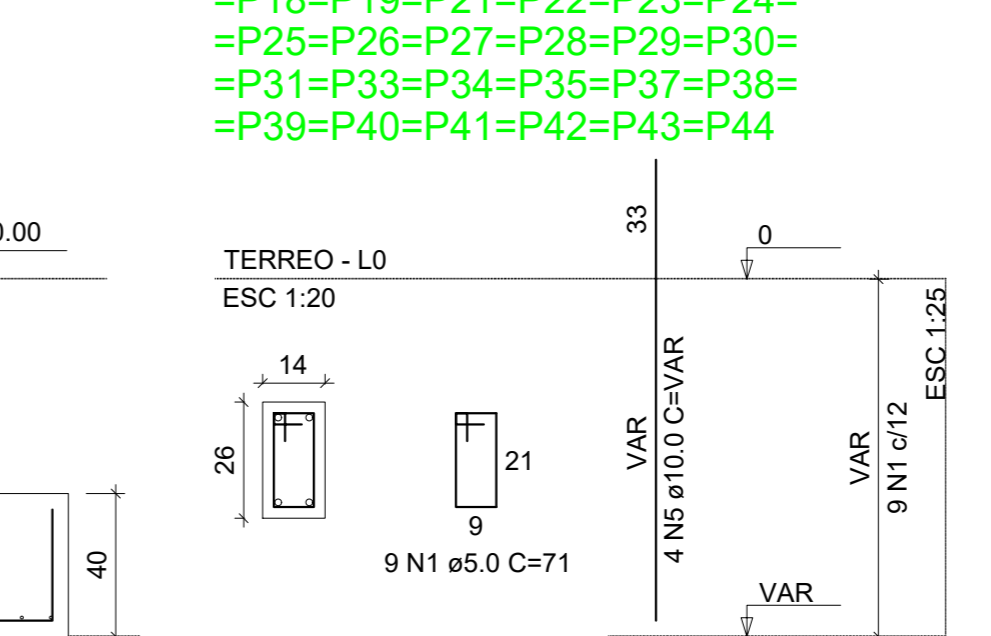
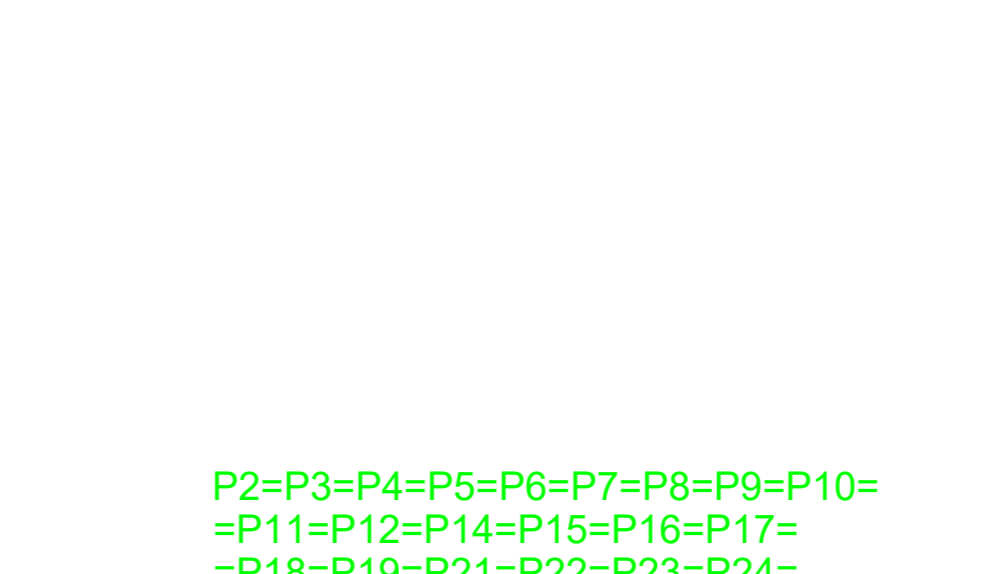
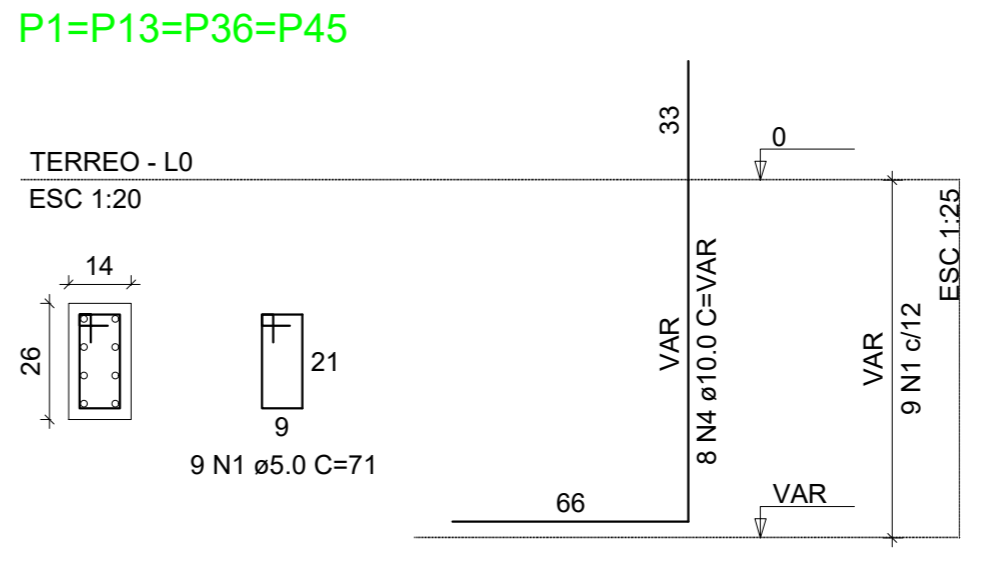
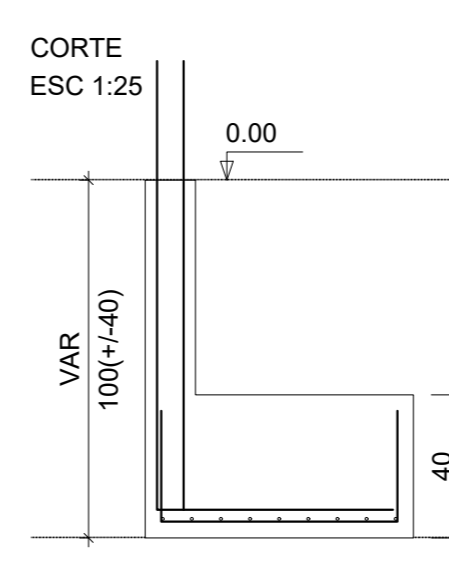


Solo com capacidade de suporte > 2.00 kgf/cm²
peso específico > 1600.00 kg/m³

S2=S3=S4=S5=S6=S7=S8=S9=S10=S11=S12=S14
=S15=S16=S17=S18=S19=S21=S22=S23=S24
=S25=S26=S27=S28=S29=S30=S31=S33=S34
=S35=S37=S38=S39=S40=S41=S42=S43=S44

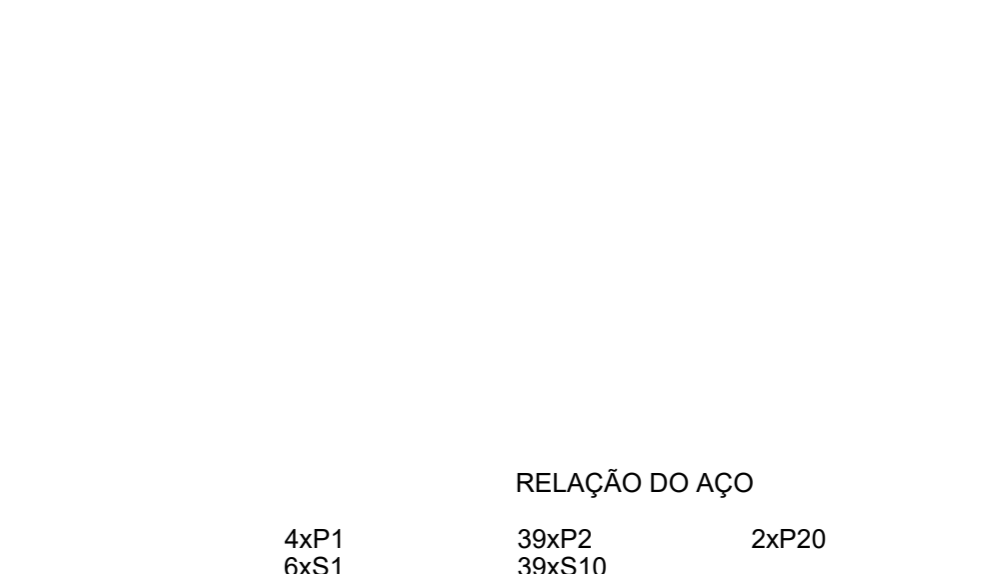
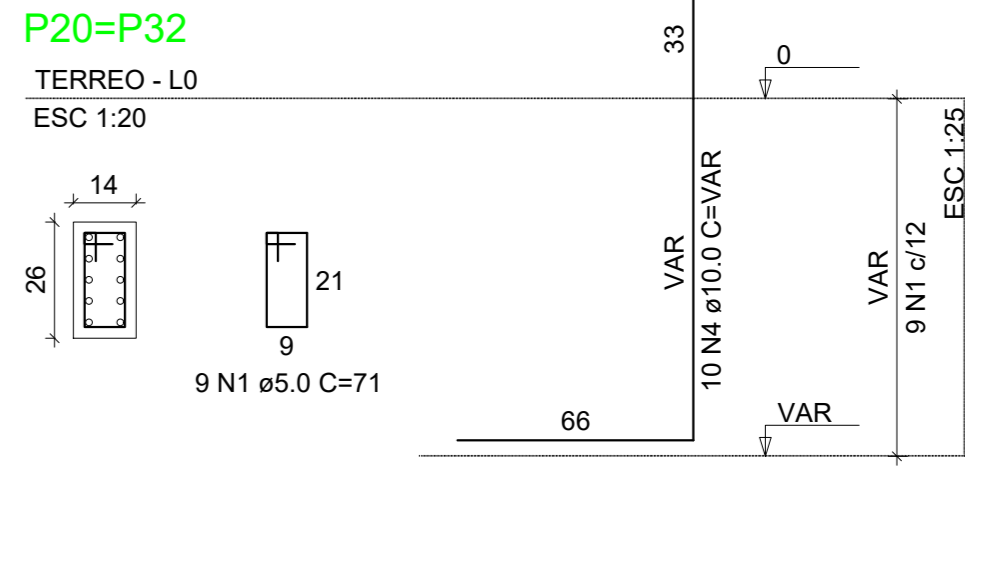


Solo com capacidade de suporte > 2.00 kgf/cm²
peso específico > 1600.00 kg/m³



Solo com capacidade de suporte > 2.00 kgf/cm²
peso específico > 1600.00 kg/m³

P1=P13=P36=P45
=P11=P12=P14=P15=P16=P17=
=P18=P19=P21=P22=P23=P24=
=P25=P26=P27=P28=P29=P30=
=P31=P33=P34=P35=P37=P38=
=P39=P40=P41=P42=P43=P44



RELAÇÃO DO AÇO				
ACO	N	DIAM (mm)	QUANT	C.TOTAL (cm)
CA50	1	5.0	405	74
CA50	2	8.0	495	124
CA60	3	8.0	405	74
CA60	4	10.0	52	VAR
CA60	5	10.0	156	VAR

RESUMO DO AÇO			
ACO	DIAM (mm)	C.TOTAL (m)	PESO - 10% (kg)
CA50	8.0	1176.8	510.8
CA50	10.0	201.8	204.5
CA60	5.0	287.6	48.8

Volume de concreto (C-30) = 13.79 m³
Área de forma = 95.40 m²

	PROJETO	PROJETO ESTRUTURAL LADO ESQUERDO 6 UNIDADES	PROPRIETARIO	PREFEITURA MUNICIPAL DE RIO RUFINO	
	CONTEUDO	LOCAÇÃO - FUNDAÇÃO	RESP. TEC.	ILDJEANNY MUNIZ	
	ENDEREÇO	CIDADE RIO RUFINO - SC	CREA S/C - 077439-5	DATA	JUN/22
				FOLHA	01